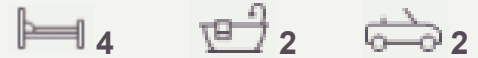




Beaumont



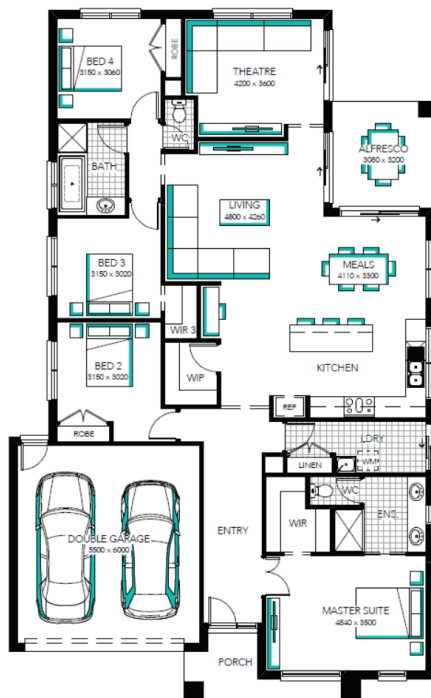
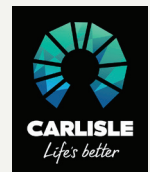
\$575,700*

LOT 903

Olivine

DONNYBROOK

TOTAL AREA	LOT WIDTH	HOUSE
448m ²	14m	233.32m ²



- FIXED PRICE SITE COSTS AND CONNECTIONS
- DEVELOPER AND COUNCIL REQUIREMENTS
- FLOORING THROUGHOUT
- 20MM CAESARSTONE BENCHTOP WITH 16MM SHADOWLINE TO KITCHEN
- GLASS SPLASH BACK TO KITCHEN
- STAINLESS STEEL DISHWASHER
- LAMINATE LAUNDRY CABINETRY AND STAINLESS STEEL TROUGH
- WHITE LED DOWNLIGHTS TO ENTRY

Visit our Sales Centre
 1025 Donnybrook Rd, Donnybrook
 Open Monday 1pm - 5pm
 Open Tuesday - Sunday 11am-5pm

Contact us

Ben Huppert
 04466 376 463

Emma Nelson
 0466 720 006

ben.huppert@mirvac.com emma.nelson@mirvac.com

OLIVINE.MIRVAC.COM

Important Notice: While this flyer accurately reflects the proposed development at the time this flyer was created, it should be used as a general guide only. In particular, the plans, images, dimensions, sizes and areas, facilities, amenities, infrastructure, the configuration of these and other information contained in this flyer (Project Information) are based on images and information provided to us by builders and others, and may change depending on a range of variable factors including, but not limited to, council building approvals and planning consents, market conditions, finance and government and municipal requirements. As a result, the Project Information is subject to change without notice as the development progresses and we recommend that you confirm the current Project Information at the time you enter into a purchase contract. Mirvac Victoria Pty Ltd does not accept any liability for any reliance upon this flyer.

*Fixed Price current as of 12/12/2019. Hebel homes may be smaller than dimensions shown on the floorplan due the external wall thickness; see working drawings for Hebel home dimensions. Confirm land prices and availability prior to purchase. Subject to developer and council approval. Price does not include any stamp duty, government, legal or bank charges. Alterations may incur additional charges. Carlisle reserves the right to withdraw or amend pricing, inclusions and promo without notice. Bushfire (BAL) requirements will be credited back to the client if Carlisle Homes receives confirmation that the house is not being constructed in a BAL designated area. This cannot be confirmed until site survey and property information from relevant authorities is received. ## Move in with More offer applies to new quotes and initial deposits on Carlisle EasyLiving Series homes from 13 July 2019 and are available only in conjunction with the EasyLiving Home designs and Reference Guide. See a Sales consultant and visit carlislehomes.com.au/disclaimer for further details on both offers including the make and model of each inclusion. Registered Building Practitioner